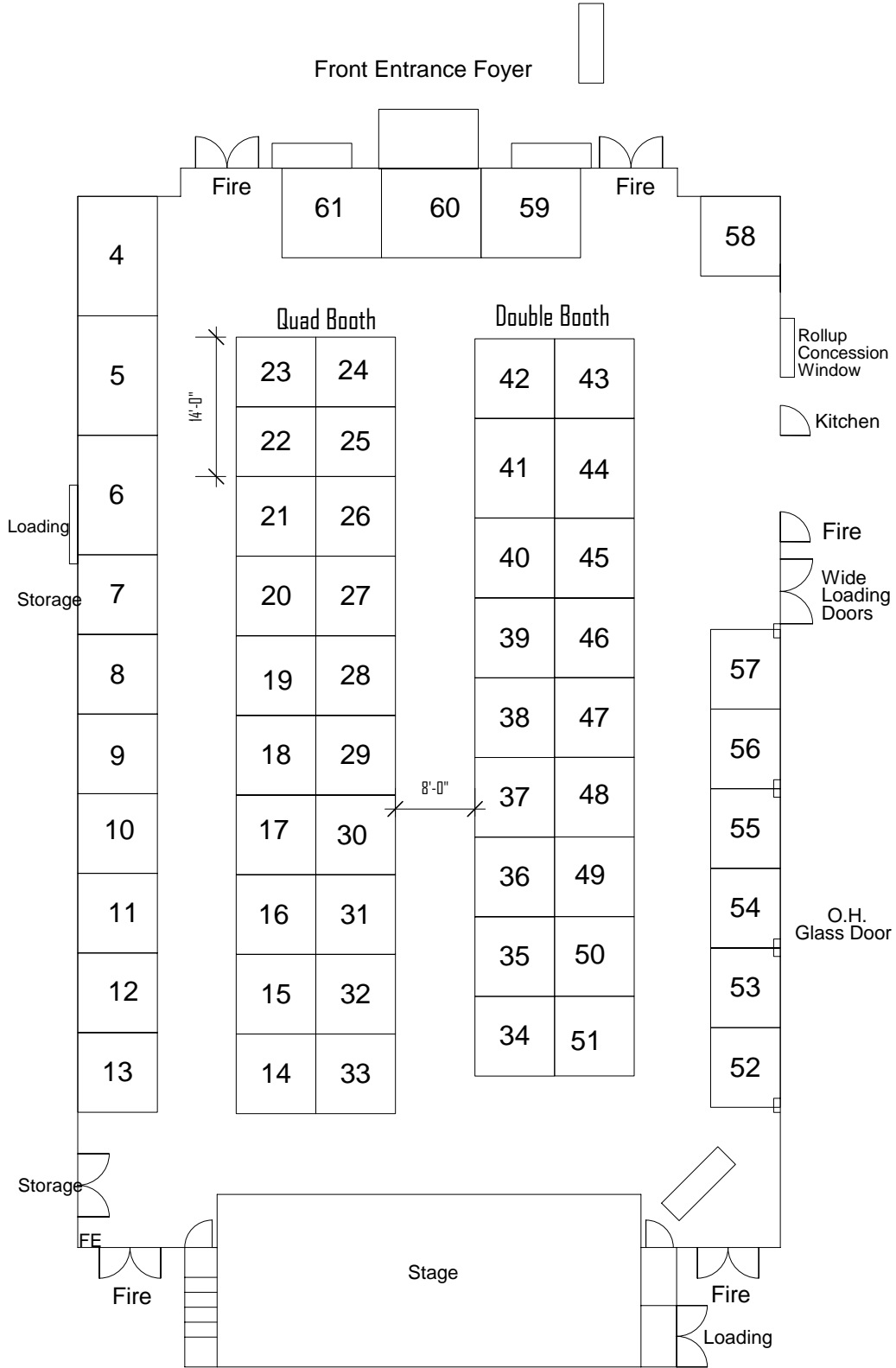


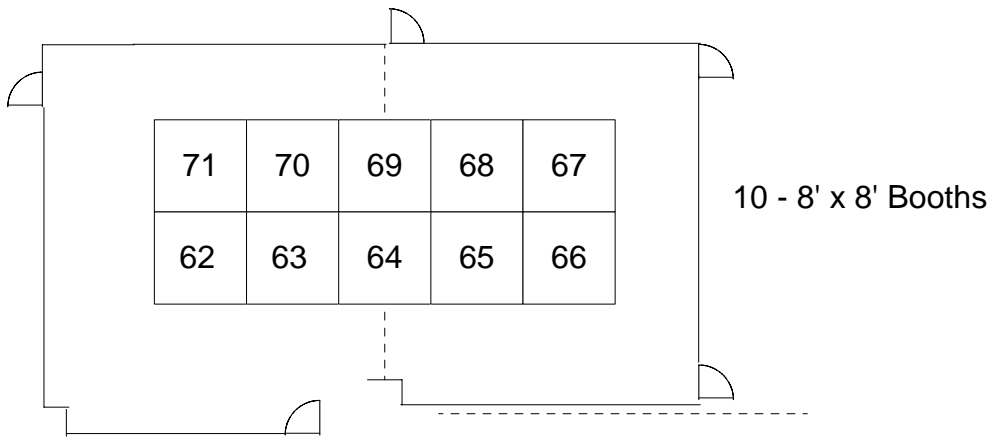
Sidney Integrated Wellness Community Society
Health Fair 2010



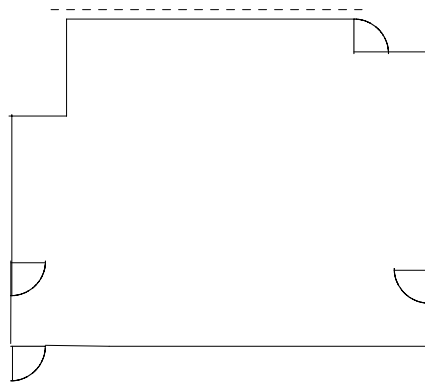
- Booths 4, 5, 6 - 8' x 12'
- Booths 7 to 40 - 8' x 8'
- Booths 41, 44 - 8' x 10'
- Booths 42, 43 - Double Booth
- Booths 45 to 51 & 58 - 8' x 8'
- Booths 52 to 57 - 7' x 8'
- Booths 59, 60, 61 - 9' x 10'

Mary Winspear Centre - Bodine Family Hall
Floorplan produced by Tents and Events

Activity Room 2 A/B



Myfanwy Pavelic Gallery



Activity Room 4